



# MONTHLY MEMBERSHIP PROGRESS REPORT

District 21 B

Results as of: 04/30/2018

GMT: WILLIAM PHILLIPI

LOCATION ARIZONA

GMT CA

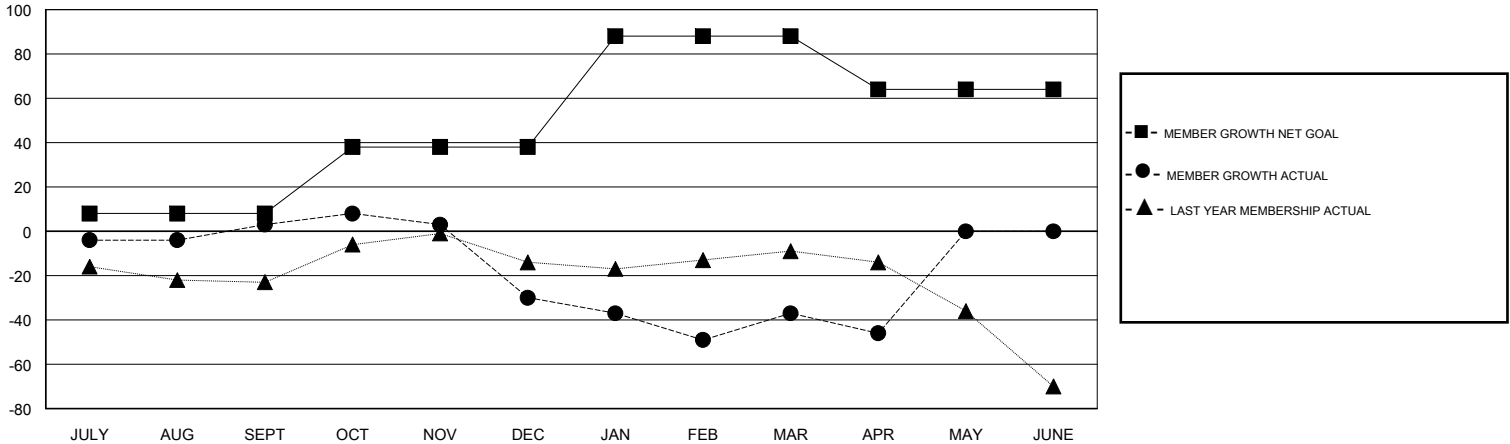
Clubs			
RESULTS FOR 2017-2018			
QUARTER	NEW CLUB GOAL	NEW CLUBS	DROPPED CLUBS
JULY/AUG/SEPT	0	0	0
OCT/NOV/DEC	0	0	1
JAN/FEB/MAR	1	0	0
APR/MAY/JUNE	0	0	0

Members			
RESULTS FOR 2017-2018			
QUARTER	MEMBER GROWTH NET GOAL	MEMBER GROWTH ACTUAL	DROPPED MEMBERS ACTUAL (including transfers)
JULY/AUG/SEPT	8	49	37
OCT/NOV/DEC	30	49	75
JAN/FEB/MAR	50	41	37
APR/MAY/JUNE	-24	13	20

GOALS AND ACTUAL NEW CLUBS CUMULATIVE



GOALS AND ACTUAL MEMBERS CUMULATIVE



DROPPED CLUBS: 1	30 CLUBS OF 43 ADDED 1 OR MORE NEW MEMBERS	<u>GENDER DISTRIBUTION</u> MALE 677 (55.54%) FEMALE 542 (44.46%) Women Percentage Fiscal Year Goal: 44%
<u>DROPPED MEMBERS</u> DECEASED 21 CLUB CANCELLED 13 OTHER 135 TOTAL 169	<a href="#">CLICK HERE FOR CUMULATIVE MEMBERSHIP DATA</a>	TOTAL FAMILY UNIT MEMBERS 335 FAMILY MEMBERS PAYING HALF DUES 170